

# NEXUS

VIRTUAL TRAINING CONFERENCE

VIOLENCE WITHIN THE HOME AND  
ITS EFFECTS ON CHILDREN

PROGRAM GUIDE



WEDNESDAY, MARCH 2, 2022



# CONFERENCE AGENDA

**8:00 a.m.**

## **SUGGESTED LOG-IN TIME**

**8:30 a.m. – 9:15 a.m.**

## **INTRODUCTIONS & WELCOME**

**Deanne Tilton Durfee, Doc.hc, Executive Director, ICAN**  
**Mark Macabe, ICAN Ambassador**  
**Annie Bosko - God Bless America**

### **Special Messages:**

***Hon. Holly Mitchell, Chairperson, LA County Board of Supervisors***  
***Alex Villanueva, Sheriff***  
***George Gascon, District Attorney***  
***Debra Duardo, MSW, EdD, Superintendent, LACOE***  
***Barbara Ferrer, PhD, MPH, MEd, Director, Dept. of Public Health***  
***Mike Feuer, Los Angeles City Attorney***  
***Adolfo Gonzales, Chief Probation Officer***  
***Antonia Jimenez, Director, Dept. of Public Social Services***  
***Clayton Kazan, MD, MS, FACEP, Medical Director, LA County Fire Dept.***  
***Jonathan Lucas, MD, Chief Medical Examiner-Coroner***  
***Michel Moore, Chief, Los Angeles Police Department***  
***Virginia Pryor, Acting Director, Dept. of Children and Family Services***

**9:15 a.m. - 10:15 a.m.**

## **MORNING KEYNOTE**

**Joe Torre, MLB Hall of Fame, Founder Safe at Home**  
***2022 Angelo Award Recipient***

**10:15 a.m. -10:30 a.m.**

## **BREAK**

**10:30 a.m. - 12:00 p.m.**

## **MORNING WORKSHOP SESSION**

**12:00 p.m. - 12:20 p.m.**

## **LUNCH**

# CONFERENCE AGENDA

**12:20 p.m. - 1:00 p.m.**

## **WELCOME**

**Lindsay Wagner, ICAN Associates President**  
**Justin Chambers, ICAN Associates Board Member**

**Champion Awards**  
**Jack Dylan Grazer**  
**Annie Bosko**

**1:00 p.m. - 1:15 p.m.**

**Special Presentation - Dune Mecartney**

**1:15 p.m. - 2:15 p.m.**

## **AFTERNOON KEYNOTE**

**Professor Evan Stark, “Coercive Control of Children”**

**2:15 p.m. -2:30 p.m.**

## **BREAK**

**2:30 p.m. - 4:00 p.m.**

## **AFTERNOON WORKSHOP SESSION**

## MORNING KEYNOTE



### **Joseph Paul Torre, Major League Baseball**

Joseph Paul Torre is an American professional baseball executive, serving as a special assistant to the Commissioner of Baseball since 2020. He previously served in the capacity of Major League Baseball's (MLB) chief baseball officer from 2011 to 2020. A former player, manager and television color commentator, Torre ranks fifth all-time in MLB history with 2,326 wins as a manager. With 2,342 hits during his playing career, Torre is the only major leaguer to achieve both 2,000 hits as a player and 2,000 wins as a manager. From 1996 to 2007, he was the manager of the New York Yankees and guided the team to six pennants and four World Series

championships. Torre's lengthy and distinguished career in MLB began as a player in 1960 with the Milwaukee Braves, as a catcher, first baseman and third baseman. He also played for the St. Louis Cardinals and New York Mets until becoming a manager in 1977, when he briefly served as the Mets' player-manager. His managerial career covered 29 seasons, including tenures with the same three clubs for which he played, and the Yankees and Los Angeles Dodgers, until 2010. From 1984 to 1989, he served as a television color commentator for the California Angels and NBC. After retiring as a manager, he accepted a role assisting the Commissioner as the executive vice president of baseball operations. In 2002, Joe and his wife Ali Torre created the Safe at Home Foundation. Safe At Home provides healing services to youth who have been traumatized by exposure to violence including domestic violence, child abuse, teen dating abuse, and sexual assault in order to empower them to live healthy lives free of violence.

## AFTERNOON KEYNOTE

### **Evan Stark, Ph.D, MSW, Professor**

Evan Stark is a sociologist, forensic social worker, a widely published author and an award-winning researcher with an international reputation for his innovative work on the legal, policy and health dimensions of interpersonal violence, including its effects on children. Dr. Stark's book, *Coercive Control: The Entrapment of Women in Personal Life* (Oxford, 2007) was named the outstanding book in the social sciences for 2007 by the American Publishers' Association and recipient of the "Choice" Award. American Library Association for "outstanding academic book reviewed in 2008." Coercive control became available



as an audiobook in 2018. Evan's work on coercive control has helped shape policies on gender violence throughout in several U.S., in Taiwan, Turkey and other countries where he has worked, and laid the conceptual groundwork for new offenses involving of 'coercive and controlling behavior' in England/Wales (2016) as well as in Scotland (2017).





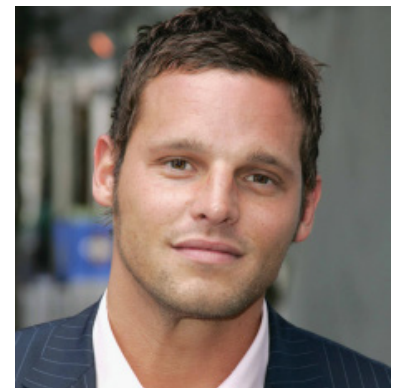
## **Lindsay Wagner, ICAN Associates President**

Lindsay Wagner, best known for her Emmy award winning role as The Bionic Woman, has starred in over 40 television movies, 8 tv series and 12 feature films. She was the very first woman to be given a serious leading role on a television series. She was nominated for two Golden Globes and won the Emmy. She has Stars on both the Hollywood and the Palm Springs Walks of Fame. For four decades, while working as one of the nation's most popular television and screen actors, starring in films such as The Paper Chase, Shattered

Dreams, The Taking of Flight 846, and A Child's Cry, Lindsay was also pursuing vigorous studies in holistic healing modalities, integrating mind, body and spirit. Throughout her career, Lindsay has worked in advocacy and public education in the areas of human rights, family violence, animal welfare, and the environment, with organizations such as ICAN (Inter-Agency Council on Child Abuse and Neglect) and Teen Talking Circles. Lindsay is passionate about awakening human potential and has combined 45 years of experience and study of Western and Eastern modalities to develop her "Quiet the Mind & Open the Heart" experiential workshops and retreats for the public and special interest groups, sharing techniques and realizations that have greatly impacted her life, inspiring others to realize how amazing they truly are. Lindsay has presented her programs in the US, Canada, Mexico, Europe and the Caribbean, working with world owned organizations such as the UK National Health Service, Saint Lucia Tourist Board, Kalani Eco community in Hawaii and the Omega Institute in Rhinebeck, New York. Lindsay has co-authored two books including a best-selling vegetarian lifestyle cookbook. Since 1990, Lindsay has been a member of the Board of ICAN Associates and has served as president since 2019.

## **Justin Chambers, Actor, Entrepreneur**

Justin Chambers is a child abuse and prevention advocate for ICAN. He has donated his time and dedication to ICAN conferences for several years. Also, lends time to the Disabled Veteran Business Alliance supporting entrepreneurship. Justin is best known for his role as Dr. Alex Karev on the ABC hit show Grey's Anatomy, where for the 16 seasons, he played a pediatrician dedicated to the health and survival of children. For his role, he received the People's Choice Award for Favorite Actor in TV Drama, Prism Award for Best Male Performance In a Drama Series, Screen



Actors Guild Award and Satellite Award for Best Television Ensemble. Justin's acting career is vast, starring in numerous films, such as, The Wedding Planner opposite Jennifer Lopez, Hysterical Blindness with Uma Thurman, The Zodiac with Rory Caulkin, Leo with Dennis Hopper & Sam Shepherd, Liberty Heights with Adrien Brody and Ben Foster, including many other film and tv projects. Prior to acting, he lived in Europe and appeared in a multitude of fashion campaigns including Calvin Klein, Giorgio Armani, Dolce & Gabbana. Currently, he can be seen in the upcoming project, The Offer, playing the role of Marlon Brando. Most importantly, Justin is a devoted husband to Keisha and dedicated father to their five children.

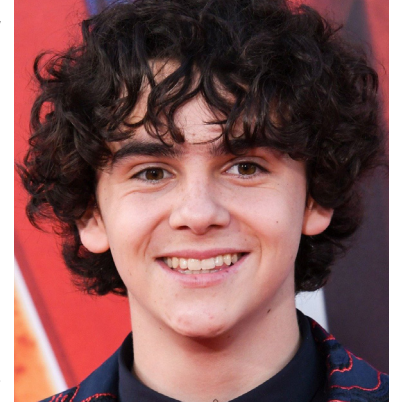


## **Annie Bosko, Singer, Songwriter, Performer**

Annie Bosko has earned well-deserved recognition in the music industry as a gifted singer, songwriter and performer. She has entertained audiences of 300,000 people, played the Grand Ole Opry, sang for the Los Angeles Lakers and Dodgers, received a standing ovation at Ryman Auditorium and has toured the country opening for acts such as Dierks Bentley, Blake Shelton, Martina McBride, Wynona Judd, Big & Rich, Pat Benetar and more. She has shared the stage and performed with Adele, Darius Rucker, Andrea Bocelli, Josh Groban and many others. She has written songs for Willie Nelson, Jessica Simpson, Marie Osmond, Ty Herndon, Rita Wilson and more. Her single, "Crooked Halo" was featured as a 'Highway Find' on Sirius XM The Highway, and the music video topped the charts on CMT. Rolling Stone magazine praised her as the #2 new country artist to watch, describing her as the "California girl next door with the country-pop delivery of Sheryl Crow." Passionate about using her voice and music to uplift those who need it most, Annie has woven universal themes of vulnerability and empowerment throughout her songs. She produced a concert to support First Responders during the pandemic, writing and performing the song "Fighter" in their honor. She then wrote and performed her inspiring song "Silver Lining" for the ICAN Child Abuse Prevention Month YouTube video honoring children and their artwork, expressing concerns and hopes for preventing harm to children. This song has reached thousands of children and has become the ICAN Anthem.

## **Jack Dylan Grazer, Actor**

Jack Dylan Grazer is an award winning young actor whose credits include: IT (2017) as Eddie Kaspbrak, Shazam (2019) as Captain Marvel Jr., Ron's Gone Wrong (2021) as Barney Pudowski, Luca (2021) as Alberto Scorfano, and starring in the HBO series, We Are Who We Are (2020) as Fraser Wilson. His roles have promoted positive images and messages of inclusion. He is being honored for his positive impact on the youth of Los Angeles and around the world, and his exceptional contribution to the LA County Child Abuse Prevention Month. Even though he had just wrapped as star of the HBO series "We Are Who We Are," he took time to host the ICAN Children's Poster Art Contest YouTube celebration. His magnetic personality and talent were critical to the success of this production to honor the children. His continuing commitment to helping prevent harm to children is invaluable.



## 1A. WHEN FAMILY VIOLENCE ENDS IN DEATH: PROMOTING HEALING IN GRIEVING CHILDREN AND TEENS

### PRESENTERS:

Lauren Schneider, MSW, LCSW, Clinical Director  
Carolyn Christ, MA, AMFT

### WORKSHOP DESCRIPTION:

When family violence ends in death, the child's natural grief reactions may be compounded due to exposure to this adverse childhood experience. Social service professionals who work with survivors of family violence are often ill-equipped to deal with traumatic reactions that may occur alongside natural grief responses. In this workshop, participants will gain an understanding of the DSM-5-TR diagnosis Prolonged Grief Disorder for children including the physical, cognitive, emotional, and behavioral responses of grieving children and teens who have experienced a death due to family violence. Participants will acquire effective intervention strategies to use with both individuals, families, and groups in agency, school, or private practice settings.

## 1B. BREAKING THE CYCLE OF DOMESTIC VIOLENCE THROUGH SCHOOL-BASED EDUCATION IN LOS ANGELES COUNTY

### PRESENTERS:

Katherine Canty, MD, Fellow, Child Abuse Pediatrics  
Keri Doggett, Constitutional Rights Foundation

### WORKSHOP DESCRIPTION:

This workshop will review the implementation of a domestic violence curriculum in high schools in Los Angeles County. As part of the workshop, we will review the nexus between child abuse and domestic violence and the importance of school-based education. Additionally, we will introduce a second curriculum targeted to middle school students on the neurobiology of trauma that we intend to implement in science classes.

## 1C. TEAMWORK IMPROVES OUTCOMES IN INVESTIGATION AND PROSECUTION OF CHILD ABUSE AND INTIMATE PARTNER VIOLENCE CASES

### PRESENTERS:

Sandra Murray, MD, UCI  
Pak Kouch, DDA, Complex Child Abuse Section of the Family Violence Division

### WORKSHOP DESCRIPTION:

Since 2016, prosecutors with the Los Angeles County District Attorney's Office's Complex Child Abuse Section have worked closely with child abuse pediatricians, law enforcement, and social workers in nearly 200 cases. Many of these abusive head trauma and complex child homicides involved current and/or prior intimate partner violence (IPV). Exposure alone is harmful to children, and often precedes more severe injury, including death. Working together as a multidisciplinary team, we can and have improved the outcomes in these cases. We want to share our experiences with conference attendees so that together we can protect more children, one case at a time.

## **1D. ENHANCING SENSORY BASED TECHNIQUES AND VISUAL IMAGERY TO ASSIST CHILDREN & FAMILIES IN TRAUMA RECOVERY**

### **PRESENTERS:**

Estela Andujo, Ph.D, LCSW, Clinical Associate Professor

### **WORKSHOP DESCRIPTION:**

Participants will enhance clinical skills related to the use of empirically driven expressive techniques to treat children, youth, and families exposed to domestic violence. Witnessing domestic violence can generate immediate and long-term consequences, in cognitive processing, and mental health. When not addressed these issues may interfere with learning, psychosocial functioning, and family conflicts. Best practices suggest that integrative methods which impact somatic sensory integration and neurobiology are essential in trauma recovery. Expressive and sensory-based activities such as visual imagery, sandplay and art, in conjunction with evidenced-based treatment modalities can assist children, adolescents and families in accessing trauma memories and facilitate healing of trauma symptoms.

## **1E. EFFECTS OF DOMESTIC VIOLENCE ON CHILDREN: PSYCHOLOGICAL, COGNITIVE, BEHAVIORAL, AND SOCIAL IMPACT**

### **PRESENTERS:**

Michael Levittan, Ph.D., Psychotherapist, Lecturer, Activist, Media Spokesperson

### **WORKSHOP DESCRIPTION:**

Domestic violence, whether physical, sexual, emotional, or verbal, is currently recognized as a serious form of child abuse. The child may not be directly involved in the abuse between parents, but witnessing abuse and growing up in a family with a lack of safety can have serious and long-term consequences for children. This workshop provides detailed descriptions of domestic violence effects on children, on psychological, cognitive, behavioral, and social levels. Commonly known effects include attachment disorders, anxiety, depression, developmental delays, regressive behaviors, defiant and oppositional behaviors, social deficits, sleep difficulties, and acting-out behaviors. Less commonly considered effects include accident-proneness, early pregnancy, difficulty identifying colors, somatization, obsessive-compulsive symptoms, and difficulty tying shoe laces. Each of the effects identified will be explored in terms of the process of how domestic violence in the family can result in the behaviors and symptoms mentioned. The overall purpose of the workshop is to provide clinicians, teachers, and parents a broad, yet in-depth, understanding of how violence between parents affects the children.



## **1F. A SYSTEMATIC APPROACH TO IDENTIFYING SUBTYPES OF EMOTIONAL CHILD ABUSE IN THE CONTEXT OF INTIMATE PARTNER VIOLENCE**

### **PRESENTERS:**

Jiwon Helen Wyman, MD, ABPN, Board-Certified Psychiatrist and Co-Chief Child Psychiatry Fellow at the University of Southern California

Amy Slep, PhD, Professor at New York University and Co-Director of the Family Translational Research Group.

### **WORKSHOP DESCRIPTION:**

A child's exposure to family violence is known to have deleterious impacts even if the child has not been physically harmed, but frontline workers may find it difficult to assess if a child has suffered or is at risk of suffering severe emotional damage. This workshop will provide an overview of the types of intimate partner violence (IPV) and their differential impacts on children. Particular attention will be given to the specific subtypes of child maltreatment that may occur in the context of IPV. The speakers will then introduce a system that can help frontline workers to better conceptualize and identify all forms of child maltreatment. The FAIR system (Field-tested Assessment, Intervention-planning, and Response) is a system for determining if allegations of maltreatment meet the threshold for abuse or neglect. Developed and tested in the U.S. military and in the state of Alaska child welfare system, the FAIR system was found to improve the consistency of decision making, reduce bias, and reduce recidivism. This workshop will describe the system and the operationalizations of maltreatment it uses, overview the computerized decision tree that facilitates decision making, and describe the training used to implement the system. We will also review the research findings regarding the impact of implementing the system. The workshop will help participants consider the potential fit of the model to their own settings.

## 2A. THE MEDICAL MANAGEMENT OF CHILD MALTREATMENT FOR THE NON-MEDICAL PROVIDER

### PRESENTERS:

Supriya Sharma, MD, FAAP, Fellow Physician, Harbor-UCLA Medical Center  
Mark Hilado, MD

### WORKSHOP DESCRIPTION:

Child maltreatment is a complex diagnosis that requires the expertise of a multidisciplinary team when it is suspected. Oftentimes, the diagnosis is initiated in a medical setting, and involves detailed history-taking, physical examination, imaging, and laboratory evaluation. Social workers, mental health specialists, child advocates, and legal counsel (amongst others) play a vital role in the disposition and care of patients once a diagnosis is suspected or confirmed. Non-medical personnel engaged in the ongoing management of these patients may often find the medical workup and jargon to be onerous and difficult to interpret. In this workshop, real-life case examples will be discussed, we hope to shed light on the medical aspects of the diagnosis and management of child maltreatment to benefit our non-medical colleagues in the care of child maltreatment victims.

## 2B. MINDFUL RESILIENCE IN THE TIME OF COVID: HELPING PROVIDERS LEARN TO COPE AND MANAGE STRESS

### PRESENTERS:

Jerome Front, MA, LMFT, Private-practice, CEU Mindfulness Trainings and Retreats

### WORKSHOP DESCRIPTION:

In the era of Covid, stress is heightened. Violence and trauma in a family can often be an emotional roller coaster for the entire family, as well as the helping professionals involved. These strong emotions can cause clinician burn-out, emotional fatigue, and shutting down at work. Occasionally, there are even moments when family members and professional caregivers are stretched to their limits in every way. This workshop will discuss how to use mindfulness to build resiliency, manage stress, as well as develop clinical skill through experiential, active learning. The workshop will review current research, and provide a clinical perspective on three facets of mindfulness for working with clients. In down-to-earth language, you will learn practical ways to use mindfulness as soon as today.

## 2C. FAILURE TO THRIVE: A CASE-BASED APPROACH

### PRESENTERS:

Carol Berkowitz, MD, Pediatrician, Harbor-UCLA Medical Center  
Dulce Alvarez, Case Manager, Failure to Thrive Program, Harbor UCLA Medical Center

### WORKSHOP DESCRIPTION:

Failure to Thrive is a symptom and not a disease. There are multiple etiologies for Failure to Thrive, some medical other environmental. Using cases of patients followed in the Failure to Thrive clinic at Harbor-UCLA Medical Center, the presenters will delineate the appropriate approach to the evaluation and management of small, and underweight infants and children.

## **2D. BEST PRACTICES WITH LGBTQ+ CHILDREN, YOUTH, AND THEIR FAMILIES: REIMAGINED. REINVENTED. RECOMMITTED.**

### **PRESENTERS:**

Teresa DeCrescenzo, LCSW, LMFT, Executive Director, Fork In The Road, Inc.

### **WORKSHOP DESCRIPTION:**

This workshop will explore contemporary definitions of sexual orientation and gender identity in an ever changing world, where fluidity is more the norm than fixed identity - a sharp contrast with previous models for identity development. Within the context of understanding human behavior in a social environment, we will review language, parameters of child protective services interventions, best practices with this cohort, case management planning, meeting educational needs, family support, and vocational training. We will examine the systemic changes needed to provide equal access to services for this population of children and youth in out-of-home care.

## **2E. HOW SHOULD THE CHILD PROTECTION SYSTEM SERVE CHILDREN WHO SURVIVE FATAL FAMILY VIOLENCE?**

### **PRESENTERS:**

Michael Durfee, M.D., Child Psychiatrist, Founder, Child Death Review Teams

Linda Garcia , Certified Child Life Specialist , Specialized Trainer on Childhood Grief Counseling for DMH

Carlos Torres, Division Chief of the DCFS CAHL

Lara Drino, Deputy City Attorney, Director, Child Abuse Policy and Prevention, Children Exposed to Violence/The REACH Team

Noelle Brown, Deputy District Attorney III, Trial Lawyer, Family Violence Division

Tracie Andrews, LCSW, MH Clinical Supervisor, Los Angeles Department of Mental Health, Prevention Services Administration – Family and Community Partnerships

### **WORKSHOP DESCRIPTION:**

Children who survive fatal family violence suffer severe trauma and loss. Historically, the child protection system focused on the response to the incident, failing to recognize the profound social and emotional impact of the tragic experience on these children. The creation of child death review teams and domestic violence review opened the door to a multi- agency focus on fatalities within families. The teams have inspired changes in protocols and practice to improve prevention, intervention and prosecution. More recently, these reviews have led to an awareness of the impact of family violence on surviving children and recognition of the critical need for immediate grief counseling. This requires a multi-agency system to identify surviving children and account for their well-being. The joint collaboration of law enforcement, DCFS, and qualified grief counselors is critical. This workshop will begin with an overview of the impact of witnessing the violent death of a family member. Multi-disciplinary experts will include case-based presentations on the response to fatal family violence and the often forgotten child survivors. This will include addressing the challenges law enforcement and prosecutors face with children who are victims and witnesses, assuring children are supported through the legal process, the role of the Hotline and DCFS staff in identifying surviving children, insights into communicating with traumatized children, and procedures for assuring child survivors of fatal family violence are identified, reported and receive immediate grief counseling.

## **2F. THE BENEFITS OF HOME VISITING: HOW HOME VISITS HELP IDENTIFY AND PREVENT CHILD ABUSE AND NEGLECT**

### **PRESENTERS:**

Kayla Kakavand, MPH, Public Health Research Associate, LA Best Babies Network  
Martha Bock, MPH, Public Health Research Associate, LA Best Babies Network  
Sharlene Gozalians, Director of LA Best Babies Network

### **WORKSHOP DESCRIPTION:**

Perinatal and early childhood home visiting (home visiting) is a preventative strategy traditionally aimed at promoting maternal and child health. Home visiting programs are voluntary programs in which trained specialists enter clients' homes, conduct health screenings, provide education on child development, and link families to community resources. Evidence-based home visiting program models have been shown to decrease child abuse and neglect. LA Best Babies Network (LABBN) functions as the oversight entity for three different home visiting models across Los Angeles County (Healthy Families America, Parents as Teachers, and Welcome Baby). LABBN oversees a network of over 700 home visiting staff at 14 hospitals and 26 community-based organizations across Los Angeles County. Together, these organizations delivered home visiting services to over 22,000 families last year. This workshop will feature three presenters from LABBN who will discuss the methods used to prevent, identify, and address child abuse and neglect within the home visiting programs supported by LABBN. The presenters will then share aggregate data on child abuse prevalence and incidence of child abuse reports for clients enrolled in the home visiting programs through LABBN. Finally, the presenters will discuss a best practice protocol and next steps for reducing child abuse and neglect through home visiting programs.